

BOARDS & PANELS

BOILER DISTRIBUTION BOARDS

Molded from 0.7, 0.9 or 1.0 mm cold rolled steel, with electrostatic powder flint gray color base and cover, with 1.5 mm copper buss bar comb type, and indication lamps, our boards design meets the needed requirements.

Models: 4, 6, 9, and 12 way.



APPLICATIONS

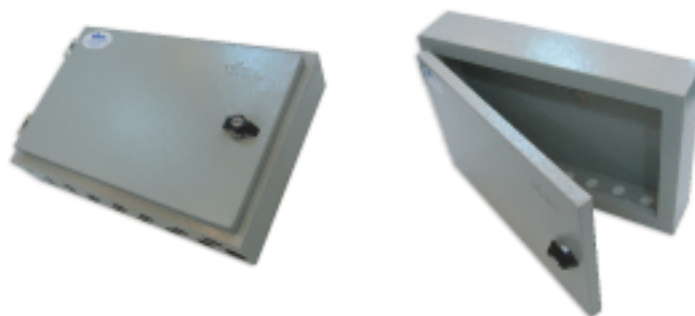
Houses, offices, small shops, and hospitals.

ADSL PANELS RACKS

Molded from 0.7, 0.9 or 1.0 mm cold rolled steel, with electrostatic powder flint gray color base and cover, our boards design meets the needed requirements.

SIZES:

Item	Size
1	30 x 30 Cm
2	30 x 45 Cm
3	40 x 50 Cm
4	45 x 45 Cm



TELEPHONE CONNECTION BOXES

Molded from 0.7, 0.9 or 1.0 mm cold rolled steel, with electrostatic powder flint gray color base and cover, our boards design meets the needed requirements. Constructed to fit as 10, 20, 30 pairs.

